

American Panel condensing unit stand assembly instructions

1. Lay the four sheet metal parts flat on the floor. Lay the left and right part(s) at the approximate width of the base, apart from each other. Figure 1.

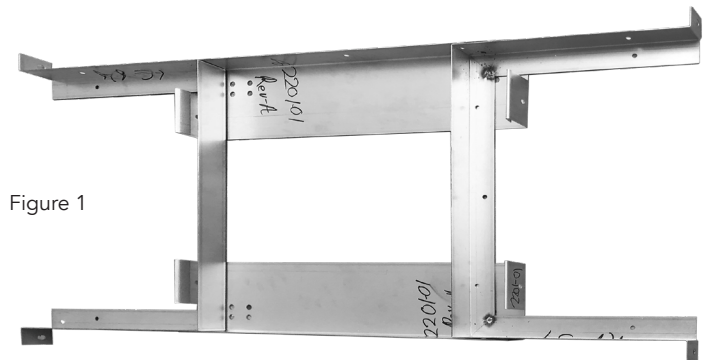


Figure 1

2. Tuck the one edge of the front part, under the hem of the left and right part and twist it up, (see Figure 2.1 & 2.2) so that it is perpendicular. Do the same for the rear part, tuck it under the hem and twist it up, so that both the front and rear are locked in place.

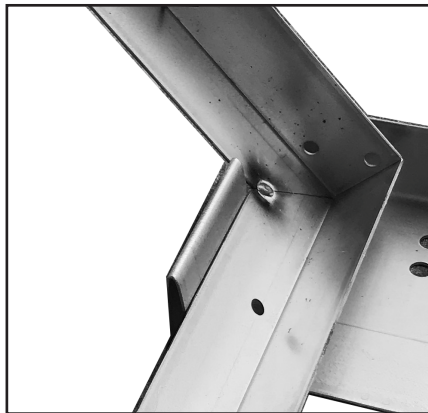


Figure 2.1



Figure 2.2

3. Fasten the braces, starting in the middle of each side, loosely thread each bolt and nut, as shown in Figure 3.

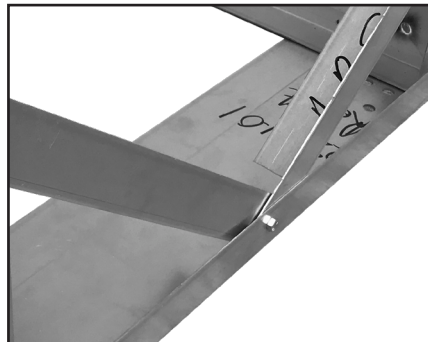


Figure 3

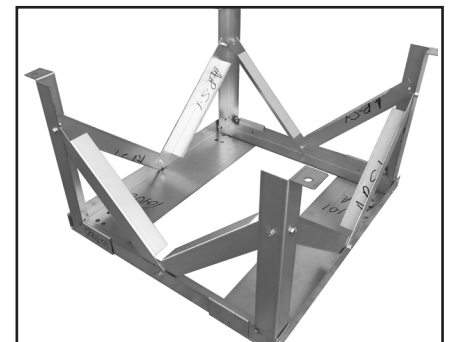


Figure 4

4. And continue to fasten bolts and nuts at each hole, as shown in Figure 4.

5. Turn the stand over to fully tighten all the bolts as shown in Figure 5.



Figure 5

The (8) braces should always be used and keep the stand rigid from flexing. The stand should always be fastened down. Use ¼" ITW Tapcon or equivalent anchors, or ½" diameter bolts with washer and nut.